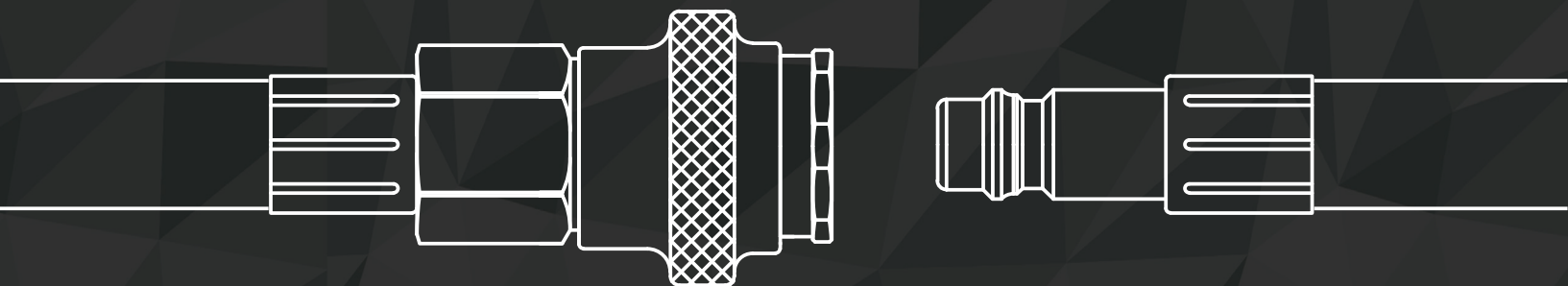


Kee. ■

Breathing Air Hose Assembly & Safety Lock Couplings



Our breathing air hose assemblies are flame resistant, heat resistant, anti-static and lightweight due to its 5 layer material construction.

keep connected



Quality Standards

Quality Standards are vital within the breathing air industry - and our assemblies conform with all the required standards, and more!



5 Layer protection - Available in 2 colour variations

Our breathing air hose assemblies are flame resistant, heat resistant, anti-static, lightweight due to the 5 layer material construction. The hose complies with **EN 14593 1/2:2005** & **EN 14594:2005** standards.

As well as meeting the necessary hose standards, our experienced assembly team have the knowledge required to ensure each hose kit is constructed correctly and reliably, with **100% of our couplings leak and function tested**.



CE Marking (CE0086) 10 x 16 size - Standard compliant

Our 10 x 16mm hose assembly (including Kee 073/074/076 couplings & plugs) has been tested and approved by BSI (CE0086) at their accredited centre of excellence.

The CE marking is for Personal Protective Equipment (PPE) and provides safety in knowledge that this product meets and exceeds the essential requirements through standards testing.



Material Information (from left to right)

- 1 Flame and Heat resistant jacket
- 2 Outer reinforced polyester braiding
- 3 Heat resistant inner wall
- 4 Inner reinforced polyester braiding
- 5 Anti-static liner

Exterior of 10mm x 16mm hose contains the following marking:

BREATHING AIR HOSE EN14593-1, EN14593-2 & EN14594/1016KEE/HEAT RESISTANT H/ANTISTATIC S/FLAME RESISTANT F/CLASS A & B/CE0086/2018

Technical Specifications	10mm x 16mm x 3mm
Working Pressure*	30 bar*
Burst Pressure**	120 bar**
Temperature Range	-20°C to +70°C
Features	10mm x 16mm x 3mm
Colours	Blue, Black
Standards	EN 14593 1/2:2005 & EN 14594:2005 (Class A & B)
Performance	Flame resistant, Heat resistant, Anti-Static, Lightweight
Anti-Static Resistivity	<10 ⁶ Ω/m in accordance with NF EN ISO8031

* - Working pressure is based on ambient temperature (23°C). Higher temperatures lead to reduced working pressures / assembly durability. Working pressure is restricted to 10 bar for EN 14593 1/2:2005 and EN 14594:2005 (Class A & B) *heat resistant* applications.

** - Burst pressure is based on ambient temperature (23°C).

Kee 076 Series

UK stock, assembly and testing

Our Kee 076 Series hose assemblies are 100% function and leak tested in the UK for your safety.

Applications

Our Kee 076 Series Breathing Air fittings are suitable and compliant for a wide range of applications including Positive Pressure Suits, H2S Protection, Half Masks, Full Masks.



076 Series Coupling



076 Series Plug



Kee 076 Couplings:

Part	Material
Back Body	Brass Nickel Plated
Valve Body	Brass Nickel Plated
Sleeve	Brass Nickel Plated
Spring	Stainless Steel
Locking Ring	Stainless Steel
Locking Balls	Stainless Steel
Seals	EPDM (NBR Optional)

Kee 076 Plugs:

Part	Material
Plug	Brass Nickel Plated

Stainless Steel Plugs available

Valve Type:

Single Shut Off

Coupling working Temperature:

-40°C to +130°C

Coupling Working Pressure:

35 Bar, maximum static working pressure with safety factor of 4 to 1

Nominal Diameter:

7.4mm

Technical File available upon request

The global landscape is changing quickly; we are not interested in keeping up, only in leading the way.

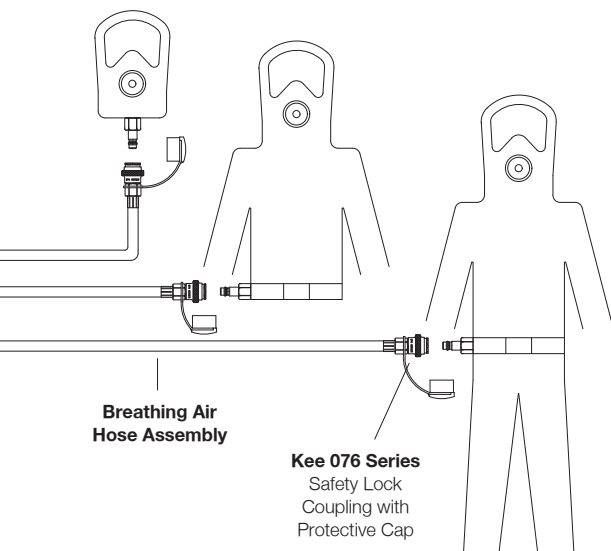
Tony Keeley

MD - Kee Connections



Safety Locking System

The idea behind the safety lock coupling is that it can't be disconnected unintentionally, therefore protecting the user from being exposed to a hostile environment. To release the safety lock mechanism, the plug must first be pushed further into the coupling.



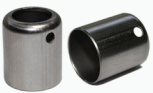
Breathing Air Range

Breathing Apparatus is used to provide the user with a continuous flow of air from an independent source.

Air is often provided by connecting one end of the hose to a compressor and the other end directly to the waist belt or directly to the mask/via a filter.

Our hose assemblies (EN14593 & EN14594 certified) can be used in a wide range of half masks, full masks, hoods and suits.

Attention to detail



Ferrule Inspection Holes

Our ferrules contain a small inspection hole so you can see the hose is in the correct position after assembly. This helps the end user ensure the hose is in a functional condition during usage.



Protective Caps

Protective Caps secure fittings to protect them from environmental dust and dirt. They also prolong the lifespan of the coupling/plug and help to keep it in good working condition. (sold separately)



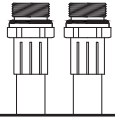
EPDM Seals

In our 073, 074, 076 series couplings we use EPDM seals - one of the most durable rubbers available. These seals are specially designed.

Call us on 0151 203 1830 for all enquiries or for more information.

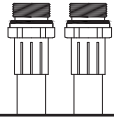
Hose Assemblies & Individual Components

1/4" BSPP Hose Assemblies with O-Ring



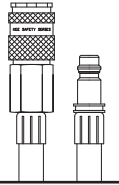
Length	Part No	Price £
1mtr	MP14-TBA10-1M-MP14	8.97
5mtr	MP14-TBA10-5M-MP14	22.29
10mtr	MP14-TBA10-10M-MP14	38.94
15mtr	MP14-TBA10-15M-MP14	55.59
20mtr	MP14-TBA10-20M-MP14	72.24
25mtr	MP14-TBA10-25M-MP14	88.89
30mtr	MP14-TBA10-30M-MP14	105.54
60mtr	MP14-TBA10-60M-MP14	205.44

3/8" BSPP Hose Assemblies with O-Ring



Length	Part No	Price £
1mtr	MP38-TBA10-1M-MP38	10.29
5mtr	MP38-TBA10-5M-MP38	23.61
10mtr	MP38-TBA10-10M-MP38	40.26
15mtr	MP38-TBA10-15M-MP38	56.91
20mtr	MP38-TBA10-20M-MP38	73.56
25mtr	MP38-TBA10-25M-MP38	90.21
30mtr	MP38-TBA10-30M-MP38	106.86
60mtr	MP38-TBA10-60M-MP38	206.76

076 Series Coupling and Plug Hose Assemblies



Length	Part No	Price £
1mtr	076C-TBA10-1M-076P	25.19
5mtr	076C-TBA10-5M-076P	38.51
10mtr	076C-TBA10-10M-076P	55.16
15mtr	076C-TBA10-15M-076P	71.81
20mtr	076C-TBA10-20M-076P	88.46
25mtr	076C-TBA10-25M-076P	105.11
30mtr	076C-TBA10-30M-076P	121.76
60mtr	076C-TBA10-60M-076P	221.66

Add -S to part number for Bulbous Sleeve

076 Series Female BSPP Coupling Straight/Bulbous Sleeve



Termination	Part No	Price £
1/4"	076CSFP14BNN	14.98
3/8"	076CSFP38BNN	14.98
1/4"	076CSFP14BNN-S	15.48
3/8"	076CSFP38BNN-S	15.48

Add -S to part number for Bulbous Sleeve

076 Series Female BSPP Plug



Termination	Part No	Price £
1/4"	076PNFP14BXN	3.92
3/8"	076PNFP38BXN	3.99

10mm ID x 16mm OD Breathing Air Hose



Length	Part No	Price £
30mtr	TBA10-30M	99.90
60mtr	TBA10-60M	199.80

Add -N to part number for Black Hose

Add -B to part number for Blue Hose

Our Breathing Air Hose is available in the following colours:

N Black **B** Blue

BSPP Male x 10mm Hosetail with O-Ring



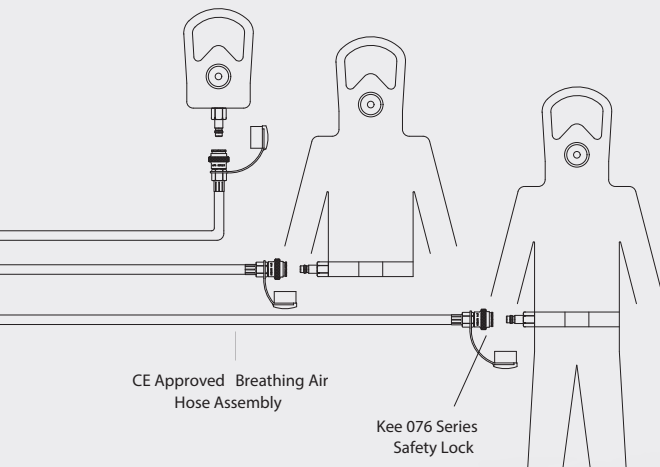
Termination	Part No	Price £
1/4"	MP14HT95BXN-S	1.34
3/8"	MP38HT95BXN-S	2.00

Stainless Steel Ferrules with Inspection Hole



ID	OD	Part No	Price £
17mm	18mm	CF1701804XX-S	0.48

Breathing Apparatus Range



Breathing Apparatus is used to provide the user with a continuous flow of air from an independent source. Air is often provided by connecting one end of the hose to a compressor and the other end directly to the waist belt or directly to the mask/via a filter.

Our hose assemblies (EN14593 & EN14594 certified) can be used in a wide range of half masks, full masks, hoods and suits.

The key characteristics of our range are its reliability, safety, standards compliant and all offered at great pricing.

For more information, call us on 0151 203 1830

Kee

Kee Connections Ltd

Unit A1 Villiers Court, Villiers Road, Knowsley Business Park, Prescot, Merseyside, L34 9ET
© Kee Connections Ltd. Registered in England and Wales No: 6038213

All information is subject to alteration without notice in line with our terms and conditions.